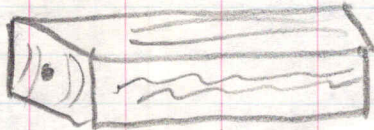


END GRAIN BOX

A



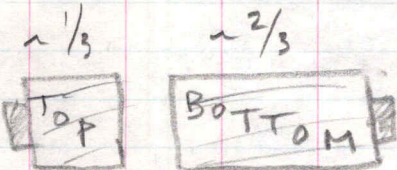
~ 3" x 3" x 8"

B



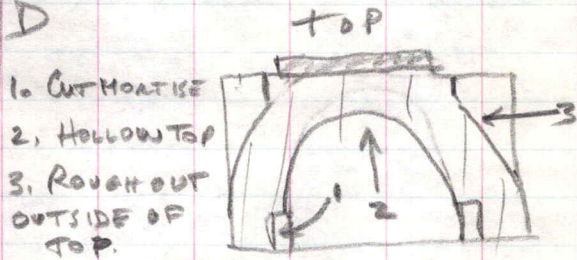
TURN ROUND + FORM TENONS ON BOTH ENDS

C



CUT APART - PARTING TOOL,
HACKSAW OR SANDSAW

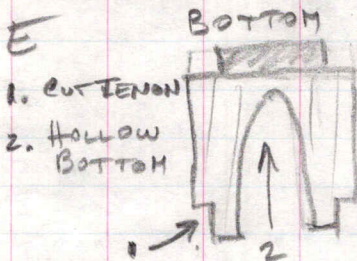
D



1. CUT MORTISE
2. HOLLOW TOP
3. ROUGH OUT OUTSIDE OF TOP.

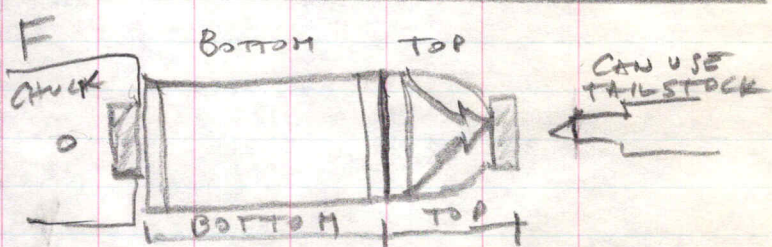
NOTE: MORTISE NEED TO BE PARALLEL

E



1. CUT TENON
2. HOLLOW BOTTOM

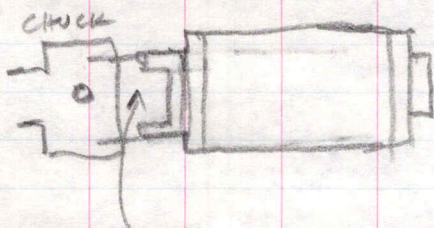
F



FINAL SHAPING OF BOTTOM + TOP TOGETHER
REMOVE TENON FROM TOP

*REFINE TENON AT JOINT FOR PERFECT FIT.

G



JAM CHUCK

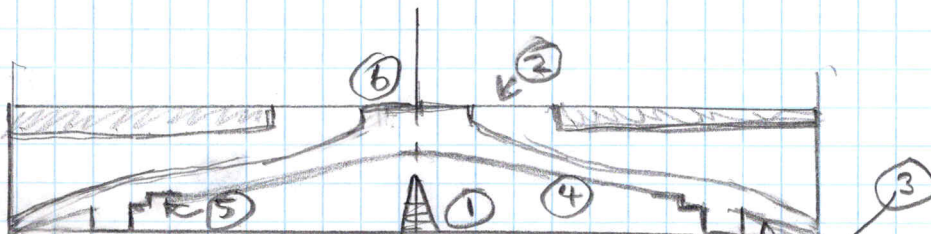
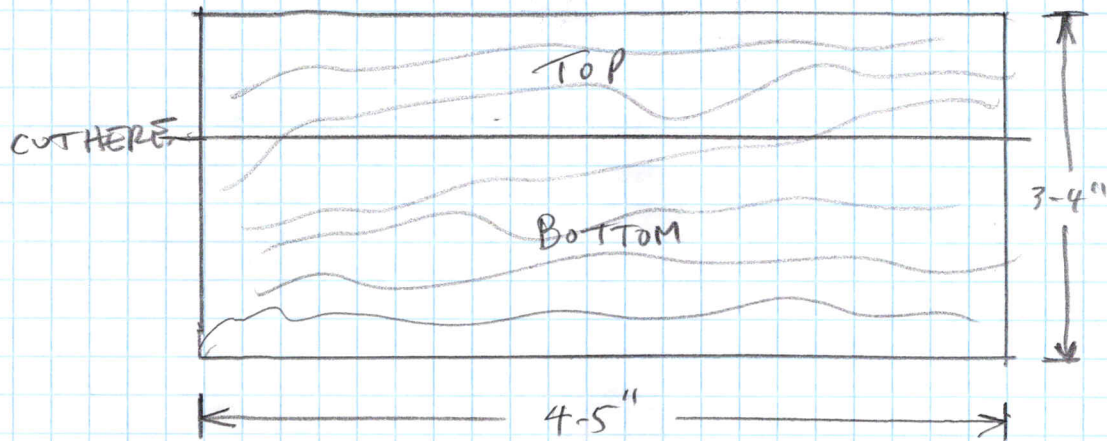
REVERSE JAM CHUCK BOTTOM
+ REMOVE TENON + SHAPE
BOTTOM.

REFERENCES

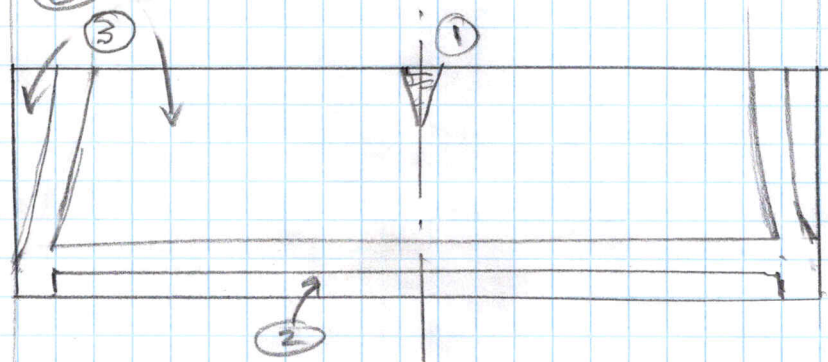
- RICHARD RAFFAN - TURNING BOXES
- " - TURNING PROJECTS
 - " - CDS IN CLUB LIBRARY
 - " - YOUTUBE

3/7/23

CROSS GRAIN BOX



- ① MOUNT ON SCREW CHUCK (DO TOP + BOTTOM TOGETHER)
- ② CUT LARGE TENON FOR CHUCK
- ③ TRANSFER I.D. OF BOTTOM + UNDER CUT
- ④ CUT OUT INSIDE DOME
- ⑤ CUT NOTCH FOR EXPANSION JAWS
- ⑥ SHAPE OUTSIDE



- ① MOUNT ON SCREW CHUCK.
- ② CUT RECESS ON BOTTOM - FOR EXPANDING JAWS OF CHUCK
- ③ CUT OUTSIDE + INSIDE OF BOX BOTTOM

NOTE: THIS WAS MADE FROM A SINGLE PIECE, BUT COULD BE MADE FROM TWO SEPARATE PIECES.